



Mountain Pine Beetle Epidemic – A First Nations Perspective

Dan George, CEO

**First Nations Mountain Pine Beetle Initiative
Presentation to Forest Information Workshop
Kamloops, BC**

PRESENTATION OVERVIEW



- FNMPBI Evolution/History
- First Nations Leadership Council
- New Relationship
- First Nations Forestry Council
- Environment We Operate In
- First Nations MPB Impact Assessment (Phase I)
- Harmonized Strategy Development
- Strategy Development Process
- Community Protection
- Next Steps



“People must understand that our activity on the land is not a result of the Mountain Pine Beetle epidemic, it is a result of Aboriginal title and rights.”

Satsan

Wet’suwet’en Hereditary Chief

First Nations Governance Centre, CEO/President



FNMPBI EVOLUTION/HISTORY



- Born out of the September 2005 First Nations MPB Forum
- Result of Minister Coleman's offer of 2 to 3 seats on the Emergency Response Team
- Collegial partnership/relationship with ADM Ray Schultz
- Operationally accountable to the FNFC and DM, Doug Konkin
- Politically accountable to FNLC and Minister Coleman

FIRST NATIONS LEADERSHIP COUNCIL



- Members
 - First Nations Summit
 - Union of BC Indian Chiefs
 - Assembly of First Nations, BC Region
- Unprecedented cooperation
- Shared goals
- Common Voice



NEW RELATIONSHIP



- To encourage long term sustainability for First Nations communities affected by the Mountain Pine Beetle epidemic
- To achieve First Nations economic self-sufficiency and become strong economic partners through...
 - creation of new institutions/bodies,
 - sustainable land and resource development,
 - shared decision-making, and
 - shared benefits that support First Nations as distinct and healthy communities (royalty/revenue sharing).
- ‘Hope’ for all British Columbians

FIRST NATIONS FORESTRY COUNCIL



- The FNFC mandate is to advance First Nation's interests in BC forests by building consensus on policies and programs, and communicating them to the federal and provincial governments.
- Provide resources for MPB impacted First Nations to address impacts and priorities.

First Nations Forestry Council

#615-100 Park Royal South

West Vancouver, BC V7T 1A2

Telephone: (604) 952-4488

Fax: (604) 921-4401

Email: admin@fnforestrycouncil.ca

CEO: Linda Simon



THE ENVIRONMENT WE OPERATE IN



FNFC

- * Softwood lumber
- * International Trade
- * Treaty * FRO * Stumpage
- * Standardization/Certification
- * Ecosystem Stewardship Planning
- * Royalty/Resource Sharing
- * NTFR * Forest Science Board (2)

**FC Leadership
Minister/DM**

**MPB Mgmt.
Team**

**First
Nations**

- * BC Timber Sales
- * Operations
- * Corporate Services
- * Tenure & Revenue

ERT

- * Harmonization
- Ecosystem Stewardship
- Community Protection
- Sustainable Economy
- Engage FN & Protect Cultural Values
- * Relationship Building
- * Facilitate Dialogue

Prov of BC

FNMPBI

Role of Federal Government?

\$125m provided thus far

\$1b promised over 10 years.

FIRST NATIONS MOUNTAIN PINE BEETLE IMPACT ASSESSMENT (PHASE I)

- 99 bands representing 58,682 people
- 63% of impacted FN have < 600 population
- 37% of impacted FN have >600 population
 - North=28 Bands
 - Central=24 Bands
 - Southwest=24 Bands
 - Southeast=23 Bands
- 42% of respondents see fire protection and fuel mgmt. as a priority
- 42% of respondents see Land Use Planning as a priority including:
 - Harvest and restoration (20%)
 - Fish and wildlife habitat preservation and restoration (12%)
 - Land development (10%)
 - Inventories (7%)
 - NTFR identification (4%)
 - Mapping (3%)
- 31% of respondents see economic development including training and employment as a priority

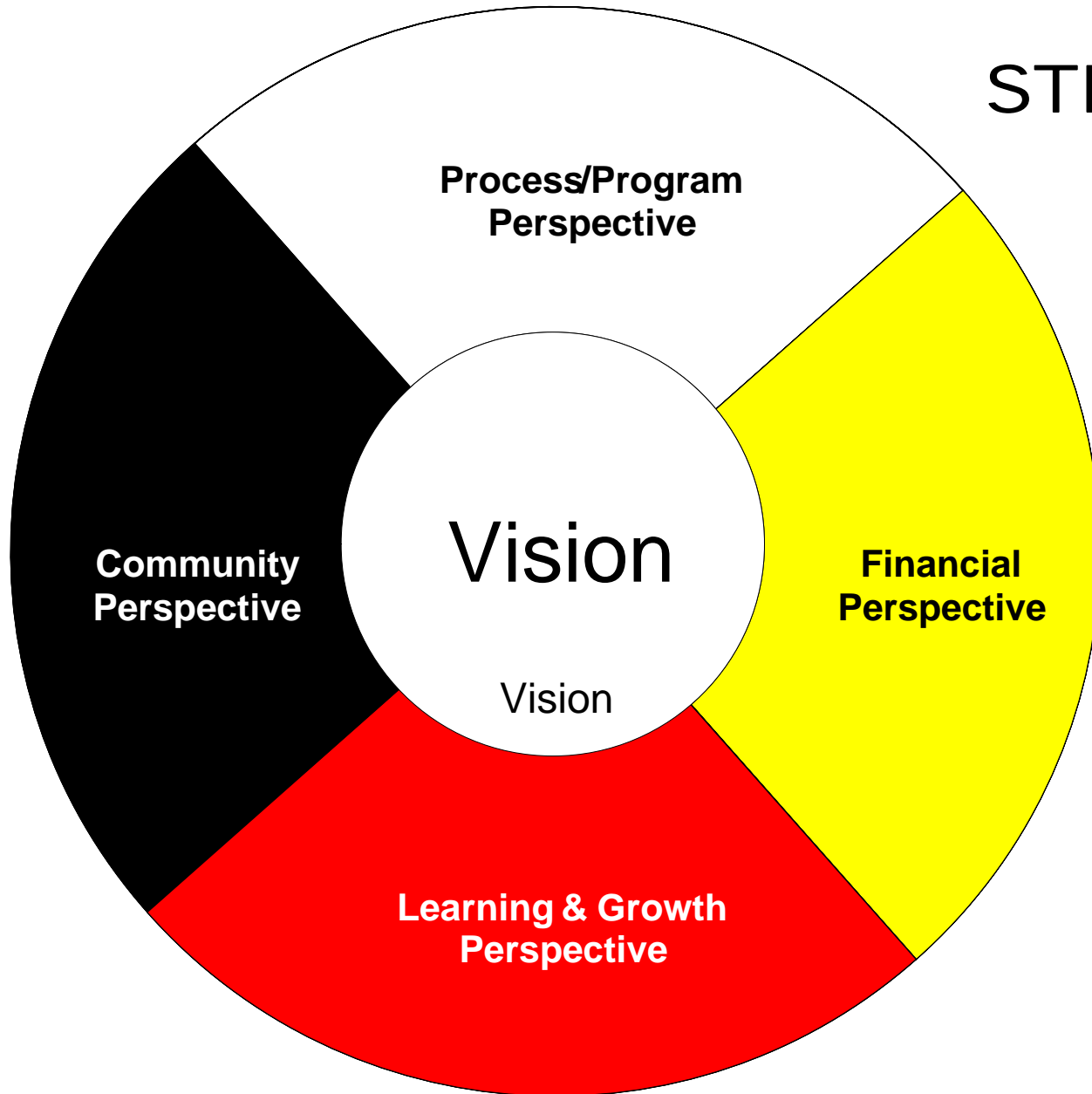


HARMONIZED STRATEGY DEVELOPMENT



- **COMMUNITY PROTECTION**
 - The MPB infestation has created a large fire threat to over 100 First Nations communities throughout the province of BC where the timber is currently dead or dying.
- **SUSTAINABLE ECONOMY**
 - Response to the MPB epidemic requires new, expanding, and emerging economic and business development.
- **ECOSYSTEM STEWARDSHIP**
 - The MPB epidemic has serious consequences for agriculture, conservation, wildlife habitat and biodiversity. Aggressive silviculture will be required to shorten the recovery time and restore the forest.
- **ENGAGE FIRST NATIONS & PROTECT CULTURAL VALUES**
 - Embedded in all these areas, First Nations have an expressed need to minimize cultural disruption by ensuring that the rich, vibrant, spiritual and environmental connection they have with the land remains intact.

TURNING STRATEGY INTO ACTION



If we are to realize our vision for First Nations:

What value must we deliver to our citizens?

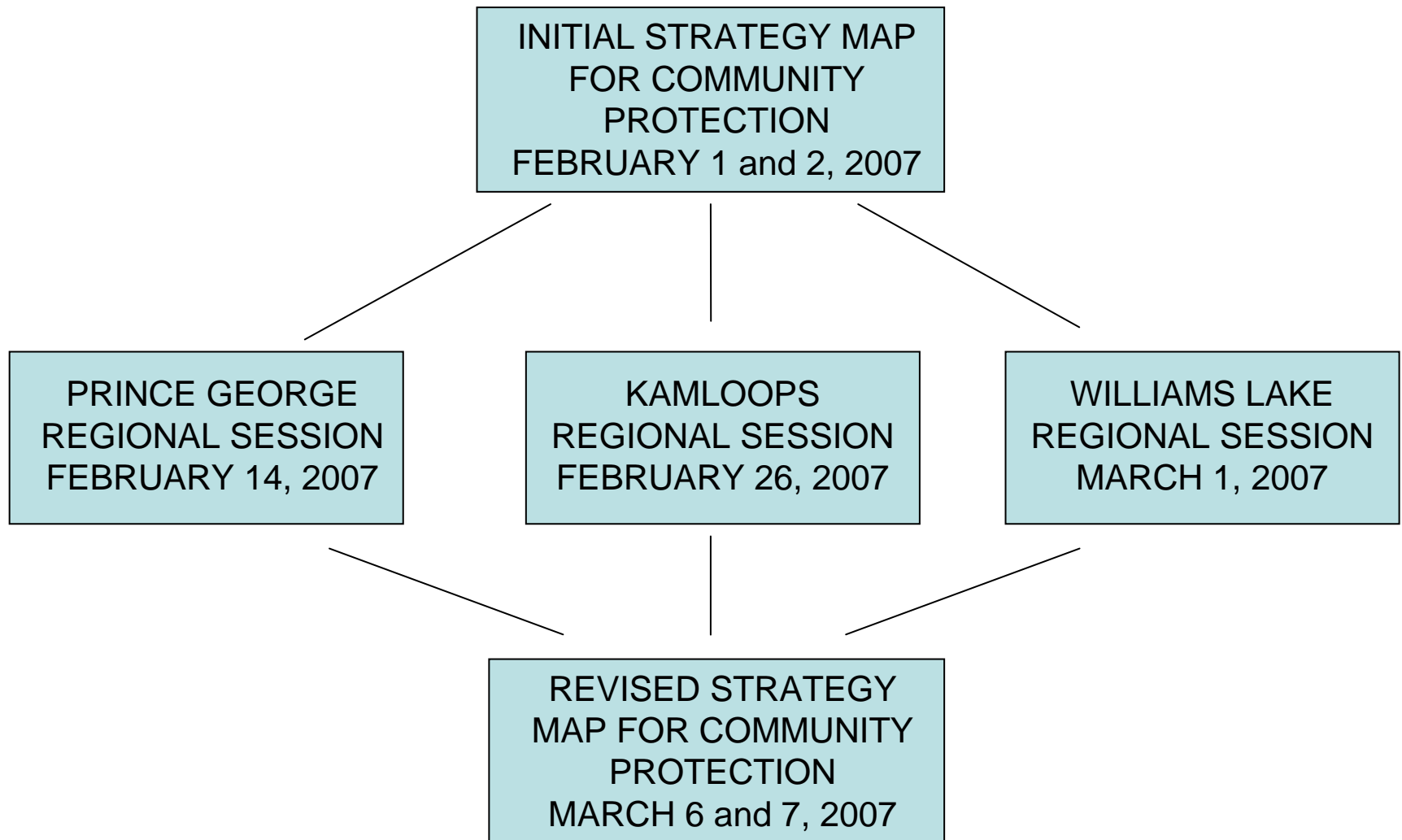
What processes and programs will we need to deliver those community values?

How must we operate financially?

What investments will be necessary to sustain our vision in the long term?

STRATEGY DEVELOPMENT PROCESS

COMMUNITY PROTECTION



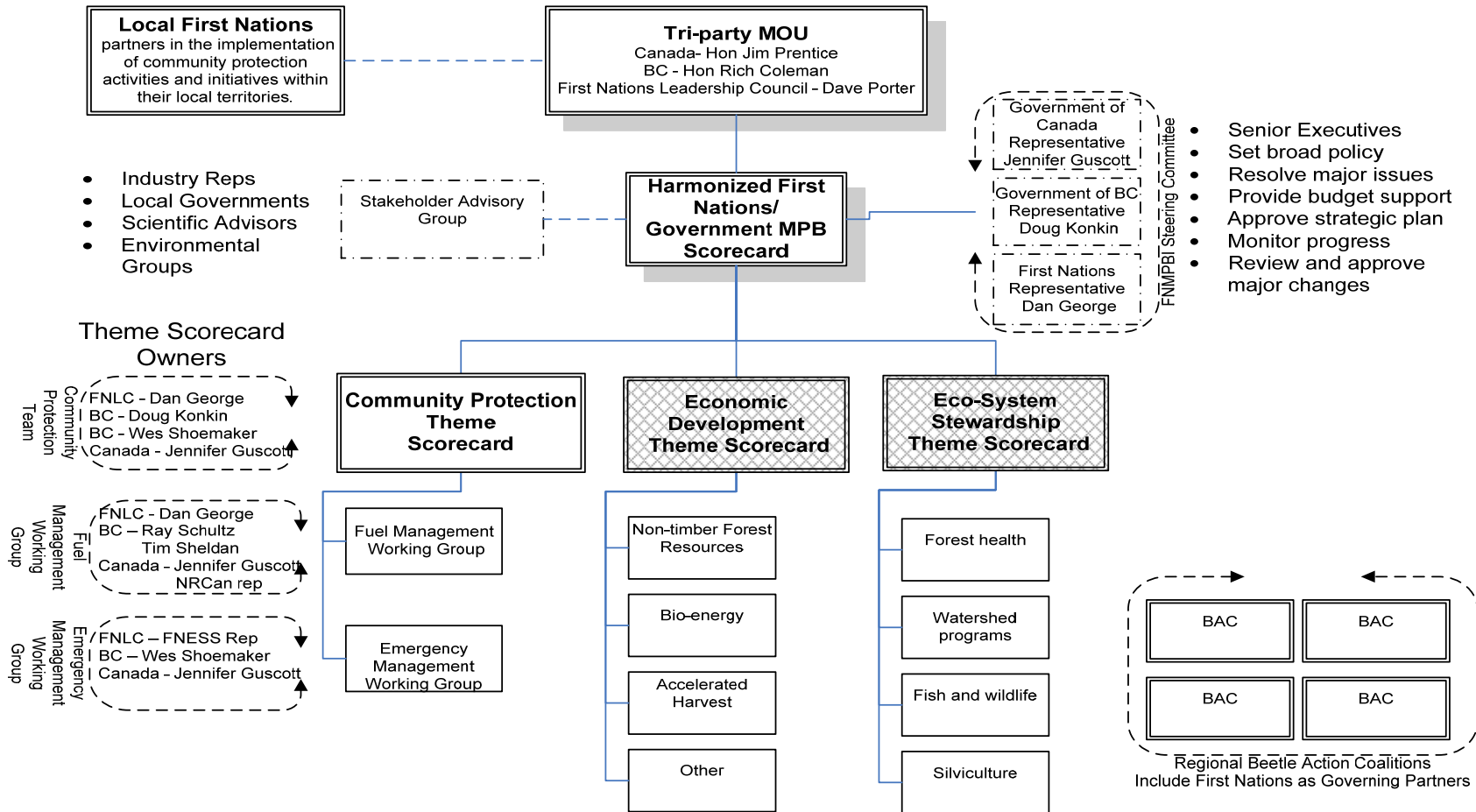
COMMUNITY PROTECTION



Objective Information Sheet

Short Name	Perspective	Status
Communities implement FM Plans	Customer	Rough Draft
Lead Agency: FNESS	FN Lead on plan development	
Partner Agency: INAC	Funding	
Partner Agency: MoFR	Model FM plan development	
Description:	First Nations Communities are actively developing fuel management plans and maintaining established fire protection zones in concert with adjoining jurisdictions.	
Clarifying Examples:	The work of fuel management planning and treatment is largely completed by First Nations people with a strong emphasis on local or regional residents. FNFC and INAC have endorsed FireSmart as the standard for community protection and funded program implementation.	
Strategic Theme	Fuel Management, Engage First Nations, Protect Cultural Values	
Cause and Effect Relationships:	Supports Fuel Management vision Supported by F1 and F2, P1 and P4	
How much change will be required to implement this objective?	Fire departments must work closely with FNESS. FNESS must put FireSmart front and center in its program.	
Rationale for this objective	Fundamental to the achievement of the Community Protection vision.	
Concerns and Risks	Jurisdictional and funding issues delay effective completion of fuel management plans.	
Possible Measure Candidates		
Measure 1	% of communities with active treatment programs	
Measure 2	% of communities adopting FireSmart standards	
Driving Initiatives	Engagement of Fire Depts., OFC and support from the Partners in Protection Prgm.	
Future Improvements	Recognition program for communities achieving FireSmart standards.	

Appendix A: Proposed Tri-Party Mountain Pine Beetle Governance Model





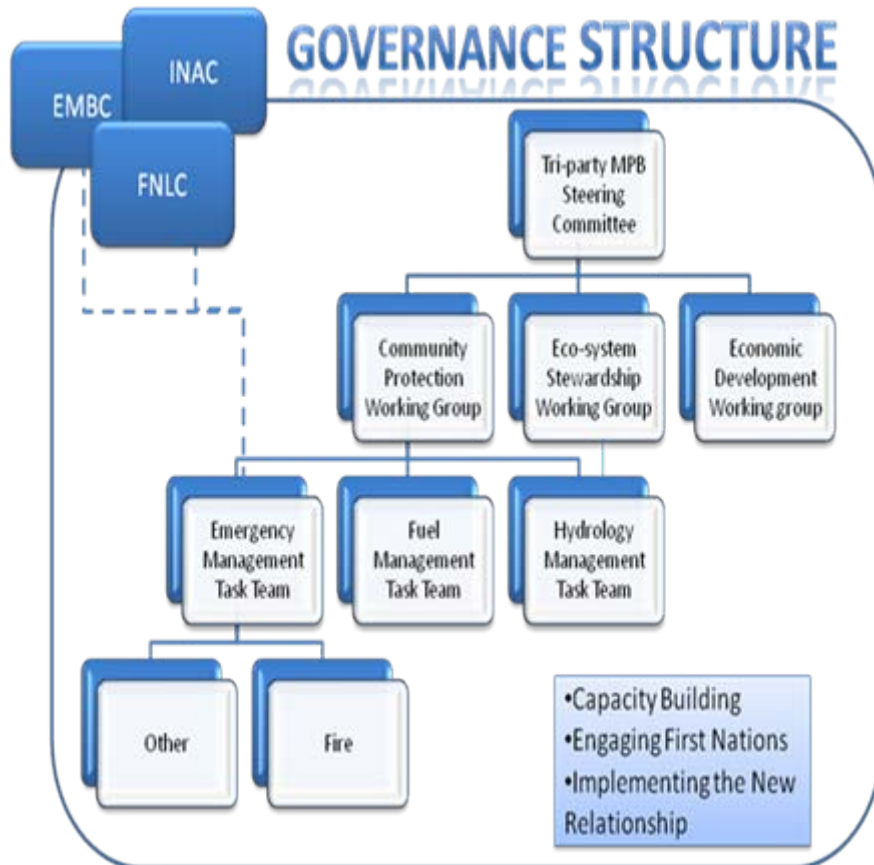
Information Overload



MESSAGES FROM THE MINISTER

- Streamline Governance Model
- Cost Out Objective Information Sheets
- Proceed With Rolling Out Sustainable Economy and Ecosystem Stewardship Themes

GOVERNANCE STRUCTURE



The Partners intend to establish a senior level MPB steering committee to provide guidance and policy direction to tri-party working groups in each of the above mentioned theme areas. These working groups in turn may establish joint task teams to accomplish related sets of objectives. The working groups will not supplant or mirror existing government to government bodies but rather will facilitate the inclusion of First Nations as full partners in those relationships.



OPPORTUNITIES

- Aging BC demographic – majority of Aboriginal population below the age of 25 years
- Mobility of workers (circular migration)
- ↑ labour market success for Aboriginal people
- ↑ Annual Allowable Cut (FRA/FRO)
- ↑ reforestation
- Bio-energy
- Mining
- Royalty/Revenue Sharing
- Shared Decision-Making
- Creation of New Institutions/Bodies

BC/
Canada

New
Relationship



THREATS

- ↑ logging, if not done properly, could have a detrimental impact on FN ability to hunt, fish, gather berries and medicinal plants, and practice spirituality.
- ↑ reforestation, it is important that the proper species mix be planted to minimize environmental disruption.
- ↑ in energy opportunities need to be balanced with FN ability to proactively respond to specific energy development proposals and government initiatives.

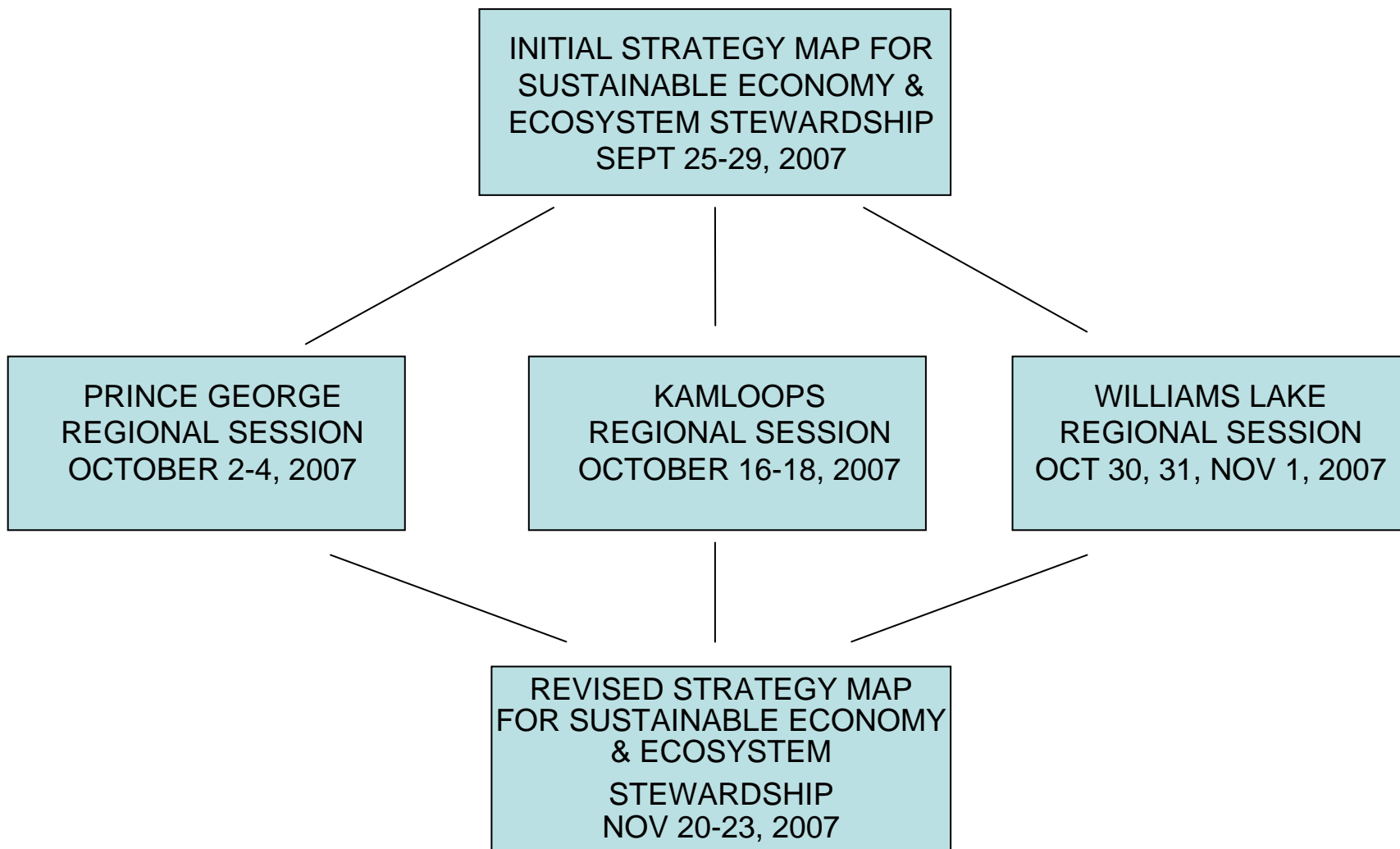


NEXT STEPS

- Continue to advance Community Protection Theme, including Fuel Management and Emergency Management
- Initiate dialogue with partners and stakeholders
 - First Nations
 - Province of BC
 - Federal government
 - Industry
 - Trusts
 - Beetle Action Coalitions
 - Local/regional economic development entities
- Based upon dialogue, develop Sustainable Economy Strategy Map and Ecosystem Stewardship Strategy Map, take out to regional sessions, adapt, and refine as necessary.
- Ongoing relationship building advancing the principles of Respect, Recognition, and Reconciliation.

STRATEGY DEVELOPMENT PROCESS

SUSTAINABLE ECONOMY & ECOSYSTEM STEWARDSHIP





FNMPBI TEAM



Dan George
Chief Executive Officer

Don Caverley
Chief of Staff

Dr. Natasha Caverley
Performance Measurement and Planning
Advisor

Zandra Ross
Executive Assistant to the CEO



QUESTIONS?



First Nations Mountain Pine Beetle Initiative

1044 Whenun Road
Prince George, BC V2K 5X8

Telephone: (250) 963-9291

Fax: (250) 963-9288

Email: fnmpbi@telus.net

The FNMPBI is funded by the Ministry of Forests and Range,
Province of British Columbia